

## **Historic, Archive Document**

Do not assume content reflects current scientific knowledge, policies, or practices.



NOV 20 1964

C & R-PREP.

RURAL CIVIL DEFENSE SLIDES

This is a collection of slides on Rural Civil Defense made especially for use by county Extension staff members throughout the United States. Please consider it as a basic collection - not a prearranged set of slides. Agents are encouraged to choose a slide from this collection that will be suitable for different audiences.

Faced with the responsibility by Presidential Order for "Information to farmers and the food industry concerning their role in an emergency and educational assistance in reducing vulnerability of homes, crops and live-stock to either covert or overt attack," you asked for more effective tools for this job. This is an attempt to provide such a resource.

Slide Album and Note Cards

This album contains six pages of slides. Each page is devoted to one phase of Rural Civil Defense. Your notes are on cards - one card for each slide - and cards and slides have corresponding numbers. By arranging slides and note cards in the same order, your talk is outlined. After a lecture, the slides may be returned to the proper places in the file and the note cards can be arranged again numerically in the file box so they are ready for use later. This system should save much time in arranging slide talks.

The slide album is arranged as follows:

Page 1. Introductory

Slides 1 through 9 are introductory in nature and can be used to challenge your audience to THINK about all kinds of disasters. Protection against natural disasters like floods, fires, and storms demand much of the same kind of preparation and shelters as would be needed in nuclear disaster.

Page 2. Nature of Radiation

Slides 10 through 23 deal with problems which result from Radioactive Fallout - what it is and how it behaves.

Page 3. Effect on People

Slides 24 through 31 show how Gamma and Beta rays can damage - even kill - all living things - human and animal.

Page 4. Protection Against Radiation

Slides 32 through 40 explain basic protection through Shielding, Time and Distance. All citizens should understand these principles of protection.

### Page 5. Shelter - Supplies and Plans

Slides 41 through 56 deal with Supplies, Food, Water and Equipment needed for family survival in case of a nuclear attack.

### Page 6. Livestock and Farms - Oak Ridge Survivors

Slides 57 through 75 show basic principles for shielding and feeding livestock during fallout. Slides show animals at the Oak Ridge Laboratory of the Atomic Energy Commission and the University of Tennessee, which have survived Atomic Radiation. These survivors prove that "all is not hopeless."

### Slide - Sho File Album

When you speak to a local audience on some phase of Rural Civil Defense, this collection of slides should provide you with a ready reference. The Slide-Sho file is arranged for your convenience in making a quick selection of slides. By removing the pages from the binder you can see at once as many as 20 slides. This is a convenience that will save you much time.

Many of the slides in this Rural Civil Defense collection could not be made locally because they show technical details not available locally. These details have been provided by nuclear experts. Other slides represent conditions in other States and agents will want to substitute local pictures whenever possible. Farm buildings, such as houses, barns and storage buildings, differ greatly from county to county and local slides should be used to show local conditions and problems.

You may use the empty spaces in this slide album for local slides. There are 75 slides in the album; there is room for 45 additional slides. You may make room for other local slides by discarding some pictures not applicable to your county. Several slides are included as suggestions for you - not for use except as comparison or contrast to your local situation.

### Slides A Valuable Teaching Tool

Slides are good educational tools for county Extension workers.

County agents depend a great deal on local pictures to teach basic facts relating to farm and home improvements. Most Extension agents believe that local pictures are better than pictures that are "shipped in."

### Know Your Audience - In What Stage of Learning Are They?

Your audience may be a civic club, a community club, a homemakers club or a 4-H club. From your personal knowledge of the people of your county, you will know how well they understand Civil Defense at the local level.

76275

### Awareness Stage

Some groups may be in the AWARENESS STAGE. These individuals simply know that there is a Civil Defense organization - they do not know the facts. To such a group, you probably would not give a detailed discussion on Nuclear Radiation, rather you would try to get them to understand that "all is not hopeless even in a major attack." By using slides to illustrate the importance of Shielding, Time and Distance, you could remove much fear from the minds of your audience and convince them that they should know more about protecting themselves - their families and their livestock.

### Interest Stage

Another audience may be in the INTEREST STAGE. They will have accepted the fact that "all is not hopeless," and they are ready to learn more about how to protect themselves. They are asking questions like - "What can I do? How will it work for me? Is it practical for my family? What do we do next?" They are beginning to "dig deeper." This is a time when people need guidance, Give these people more detailed information about protection from nuclear attack. You may have to study your lesson a little harder to give the kind of talk this group needs, but the slides and the notes will help.

### Evaluation Stage

Still another audience may be even further along - perhaps to the EVALUATION STAGE. The people of this audience are ready for a mental trial. They ask: "How can I? Can I really do it? Is this the best way for my family? When we do this, will we be better off than we now are?" When your audience is at this stage, they are depending on their neighbors and friends and upon you as a county worker to give them guidance. Your knowledge of Civil Defense should be adequate so that you can lead this audience. You may have to do more personal preparation to be able to teach people who have reached this plateau of learning.

### Trial Stage

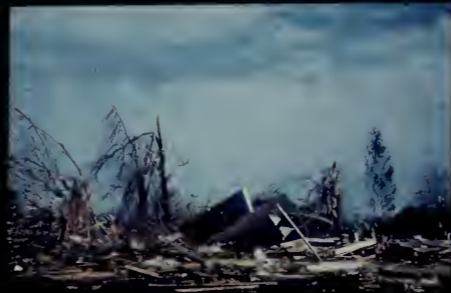
Sooner or later you may be called on to speak before a group where some people are in the TRIAL STAGE. They have said to themselves, "I am ready to do something about my share of Civil Defense." By this they mean that they are going ahead regardless of what others say or do. The trial may be on a small scale, like so many other projects are tried on a small scale, but it will be a definite trial. Maybe they are ready to "Look for the safest place in the home," to "stock food and water," or to "take a course in Medical Self-help." This is the time when these people need detailed help, from you or other qualified Civil Defense leaders. You or the leaders may visit homes to help with details.

### Make Use of Rural Civil Defense Publications

You have valuable Rural Civil Defense publications in your files. When you make slide talks you may wish to distribute appropriate bulletins following

the talk. Families need these bulletins for guidance at all stages of their learning. As a county Extension worker, your first big job with reference to Rural Civil Defense is to get your people AWARE of the need for understanding basic Civil Defense.

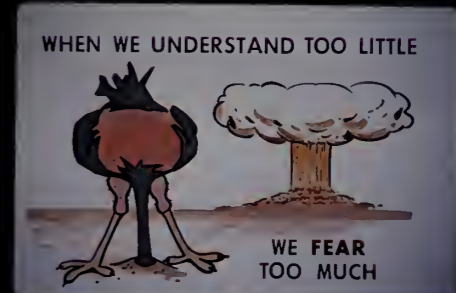
Adoption of Rural Civil Defense practices will proceed like other Extension projects - remember how long it took for most farmers to adopt hybrid corn?



**Find Your Safest Place**  
**and Make It Safer!**



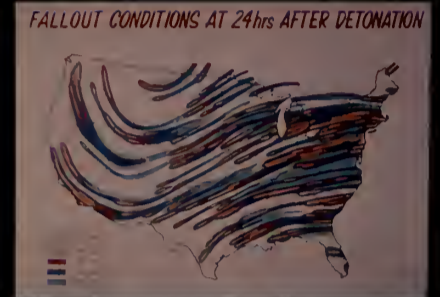
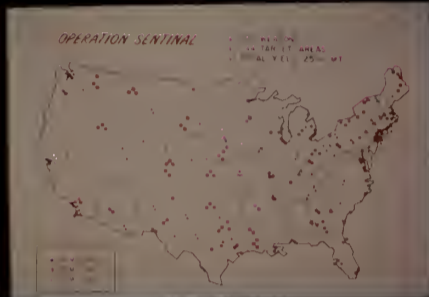
YOU CAN SURVIVE





**BENEFITS TO MANKIND**

MEDICINE    AGRICULTURE    INDUSTRY



**RADIATION** is the wave-like energy emitted from radioactive substances.

**RADIOACTIVE**

IS THE SPONTANEOUS UNCONTROLLABLE BREAKDOWN OF UNSTABLE ATOMS WITH THE RESULTING EMISSION OF NUCLEAR RADIATION

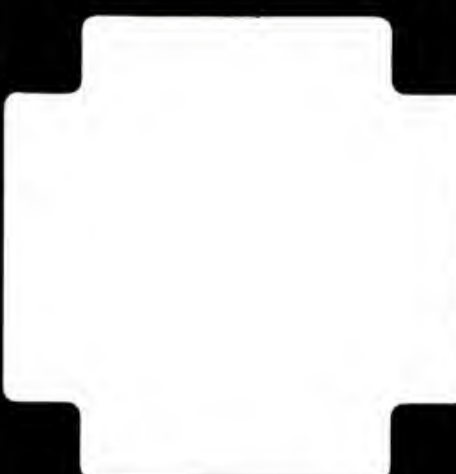
**ROENTGEN**

unit of radiation exposure

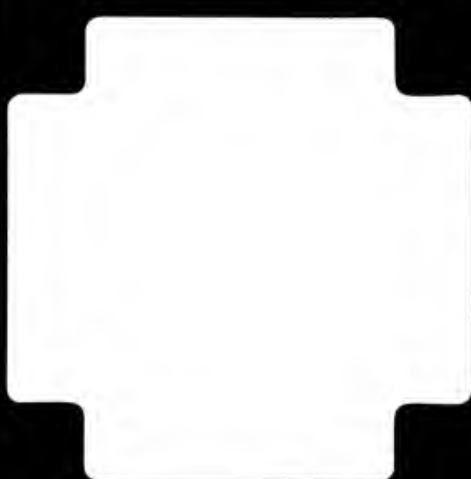
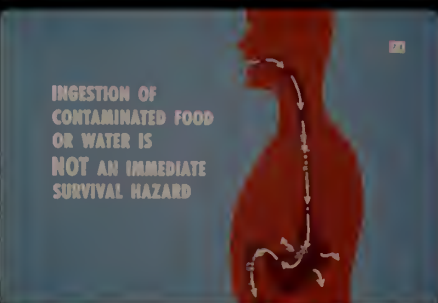
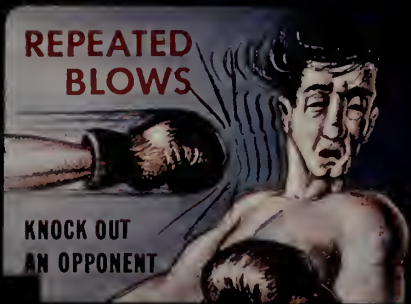


**FALLOUT IS DANGEROUS-**

But IT WILL NOT COVER THE EARTH AND KILL EVERYTHING







# SHIELDING

## COMPARATIVE THICKNESS OF BUILDING MATERIALS

LEAD	2.5 IN
STEEL	7 IN
CONCRETE	24 IN
EARTH	36 IN
WATER	50 IN.
WOOD	90 IN.

*1/1000 +*

## Shielding - Protection Factors

WOOD	1/10
STONE-CONCRETE	1/30
CAVE	1/5,000

5 FT

## SHELTERS

RADIATION REDUCTION FACTORS IN THE AVERAGE HOME

DIRT	1/50
PERMANENT SHELTER	1/100
DIRT	1/10
TEMPORARY SHELTER	1/20
SAND BAGS	1/20

FIRST FLOOR

## DETERMINE THE BEST LOCATION FOR A SHELTER

## BUYING FALLOUT SHELTERS



## FALLOUT LESS DANGEROUS WITH TIME

100 UNITS Per hour	10 UNITS Per hour	1 UNIT Per hour
1 HOUR after EXPLOSION	7 HOURS after EXPLOSION	2 DAYS after EXPLOSION

## DISTANCE - A PROTECTION FACTOR TOO

